



SCIENCE MATTERS

Science Partners Newsletter

September 2017 Issue:

- Hurricane Preparedness Information from Duke Energy
- Solar Eclipse – from Longwood
- 2017-18 *Creation Adventures* Schedule
- *Creationist Guide to SeaWorld* – October 6
- *Central Florida Habitats* – November 3
- How to Schedule a *Creation Adventure* for Your Group or Class
- Boutique for a Week – September 20-22 in Casselberry
- Science Partners Classes: September and October Reminders
- Science Partners Classes: Hurricane / Tropical Storm Policy

Hurricane Preparedness Information from Duke Energy

Prepare for
hurricane
season now.



- Create (or update) an emergency supply kit to save valuable time later. The kit should include everything an individual or family would need for at least two weeks, especially medicines, first aid supplies, and other supplies that might be hard to find after a storm strikes.
- Maintain a supply of water and non-perishable food.
- Review insurance policies, and include extra copies of the policies and other important documents in the emergency supply kit (ideally in a waterproof container).
- Keep a portable radio, TV, or NOAA weather radio on hand to monitor weather forecasts and official info.
- Maintain a plan to move family members – especially those with special needs – to a safe, alternate location in case an extended power outage occurs or evacuation is required.
- Pet owners can make arrangements to stay at evacuation shelters that accept pets, at friends' or family members' homes, or at pet-friendly hotels.

For more tips, visit the Florida Division of Emergency Management at <http://www.floridadisaster.org> or Duke Energy at <https://www.duke-energy.com/safety-and-preparedness/storm-safety>.

Solar Eclipse – from Longwood



Some of you may have traveled to see the solar eclipse on August 21. With the clouds and rain at our home in Longwood, we weren't sure if we would be able to see the eclipse. But, it cleared just in time for us to bring out our Sun Spotter for a great view. This is what we saw.

If you didn't see this solar eclipse, never fear. You won't have to wait another 99 years! The next total eclipse in the US is in a little less than seven years. Check out this website:

<http://www.eclipsewise.com/solar/SEprime/2001-2100/SE2024Apr08Tprime.html>.

2017-18 Creation Adventures Schedule

The following **Creation Adventures** are open to all homeschool families. They have been scheduled through The Classical School at The First Academy and/or Science Partners. Our goal is to provide participants with a unique and fascinating creationist perspective of God's great design in nature and to teach them how to see God's handiwork in all of creation! We hope you can join us!

- **October 6 (Friday):** **Creationist Guide to SeaWorld**
- **November 3 (Friday):** **Central Florida Habitats**, Blue Spring State Park & Lyonia Preserve.
- **December 2 (Saturday):** **St. Augustine – FL History Tour**, Old Florida Museum, Fountain of Youth, Castillo de San Marcos, Historic St. George Street.
- **January 26 (Friday):** **Manatee Snorkel Encounter**, Crystal River and Homosassa Springs Wildlife Park.
- **January 31 (Wednesday):** **For the Birds**, Orlando Wetlands Park.
- **February 16 (Friday):** **Day of the Dinosaurs**, Dinosaur World and Mulberry Phosphate Museum.
- **March 16 (Friday):** **Florida's Water Systems**, Canaveral National Seashore, Merritt Island NWR, Indian River Lagoon, St. Johns River.
- **April 16 (Monday):** **The Heavens Declare!**, Astronomy workshop – STARLAB portable planetarium.



Creationist Guide to SeaWorld – October 6



Join Bill and Merilee Clifton - creationists, authors, Florida Master Naturalists, and science educators - as we **explore SeaWorld from a creationist perspective**. **Mr. Clifton, former head of SeaWorld Orlando's Education Department, knows his way around the park!** He will lead our tour through SeaWorld as we **learn about the sea and the awesome creatures that live in it.** Did you ever wonder why marine mammals have tails that move up and down instead of side to side like fish? Or why they are born tail first instead of head first like land mammals? Come along as we answer these and many other questions, exploring SeaWorld from a creationist viewpoint and discovering how these unique life forms were specially created for a marine environment! **Your creation tour of SeaWorld will last from 9:00 AM – 1:00 PM. Then, you are free to explore SeaWorld on your own until the park closes!** Space is limited to the first 45 registrants! **Deadline for minimum number is September 22. Late registrations accepted, space permitting. See attached information/registration form.**

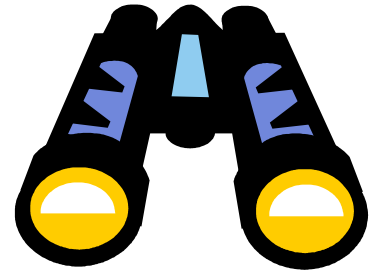
Central Florida Habitats – November 3

Join us as we explore Central Florida Habitats, observing plants and animals that were specifically designed to live in them. Our day begins at **Blue Spring State Park** (Orange City), home to several habitats including hammock, marsh, swamp, flatwoods, and sand pine scrub. We will **cruise the St. Johns River aboard a hands-on, floating science laboratory!** We'll test the river water for temperature, salinity, and turbidity. We'll dip, collect, and identify marine specimens. And, we'll enjoy our captain's narrated introduction to the wildlife and vegetation of this fragile ecosystem. We'll keep a look out for manatees, alligators, otters, snakes, deer, turtles, birds, and more. Students will have the opportunity to **earn a Jr. Birding Certificate** in the "Wings over Florida" program of the Florida Fish and Wildlife Conservation Commission. After our cruise, we'll **hike** the boardwalk through the lush hammock along Blue Spring Run as we **look for endangered manatees** near the head of the springs. Back at the picnic pavilion, we'll **see a manatee skull and rib**, and Mr. Clifton will teach us about manatees from a creationist perspective. Then, we're off to **Lyonia Preserve** in Deltona where we will take a short hike into a scrub habitat looking for one of Florida's rarest and most threatened birds, the **Florida scrub-jay**. We'll learn about plants and animals created for the scrub habitat and contrast them with plants and animals of other habitats. We'll also visit **Lyonia Environmental Center** and learn much from its educational displays and exhibits. **Deadline for minimum number is October 6. Late registrations accepted, space permitting. See attached information/registration form.**



How to Schedule a *Creation Adventure* for Your Group or Class

1. Go to Science Partners' website, www.sciencepartners.net.
2. Click on the "Creation Field Trips" and "Creation Workshops" tabs to review the field trips and workshops that we offer.
3. Go to the "Calendar" tab to see what dates are available.
4. When you have decided on an event and a date, contact us so we can begin our scheduling process and make reservations with our vendors.
5. Once everything is confirmed, we will contact you for final approval. Then, your event will be added to our website calendar. For homeschool groups, an information/registration form will be linked to your event date. For Christian school classes, a form is not needed for each participant.
6. Questions? Contact Merilee Clifton at sciencepartners@cfl.rr.com or 407-808-4458 (cell / text).



Boutique for a Week – September 20-22 in Casselberry



September 20-22 at
Metro Life Church
910 S Winter Park Dr.
Casselberry, FL 32707

www.BoutiqueForAWeek.net

Science Partners Classes: September and October Reminders

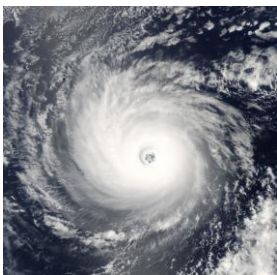
TUITION:

- Tuition for **Tuesday Longwood classes** is due on the first day of September and overdue on the 10th with a \$5 per student late fee. Tuition for grades 3-8 is \$75 (meeting 1 ½ hours per week). Tuition for high school biology is \$85 (meeting two hours per week).
- Tuition for **monthly Marine Science at SeaWorld** is \$85. It is due on each class day and overdue one week later.
- Tuition may be turned in during class or mailed to Science Partners at 343 Allison Ave., Longwood, FL 32750.



FALL BREAK: Looking ahead, as your class calendar states, there are no classes on Tues., October 17.

Science Partners Classes: Hurricane / Tropical Storm Policy



When a hurricane or tropical storm threatens our area and Science Partners must make a decision regarding whether or not to hold classes:

Longwood Tuesday classes will follow Seminole County Public Schools' decision,

Marine Science at SeaWorld will follow Orange County Public Schools' decision.

This is the simplest and the most efficient way to plan since we may not be able to contact everyone in the event of a hurricane or tropical storm. We could be without power, or you might be without power. Closings are always announced on local radio and television. Once the threat is past, we will contact our students' families regarding making up classes as needed.